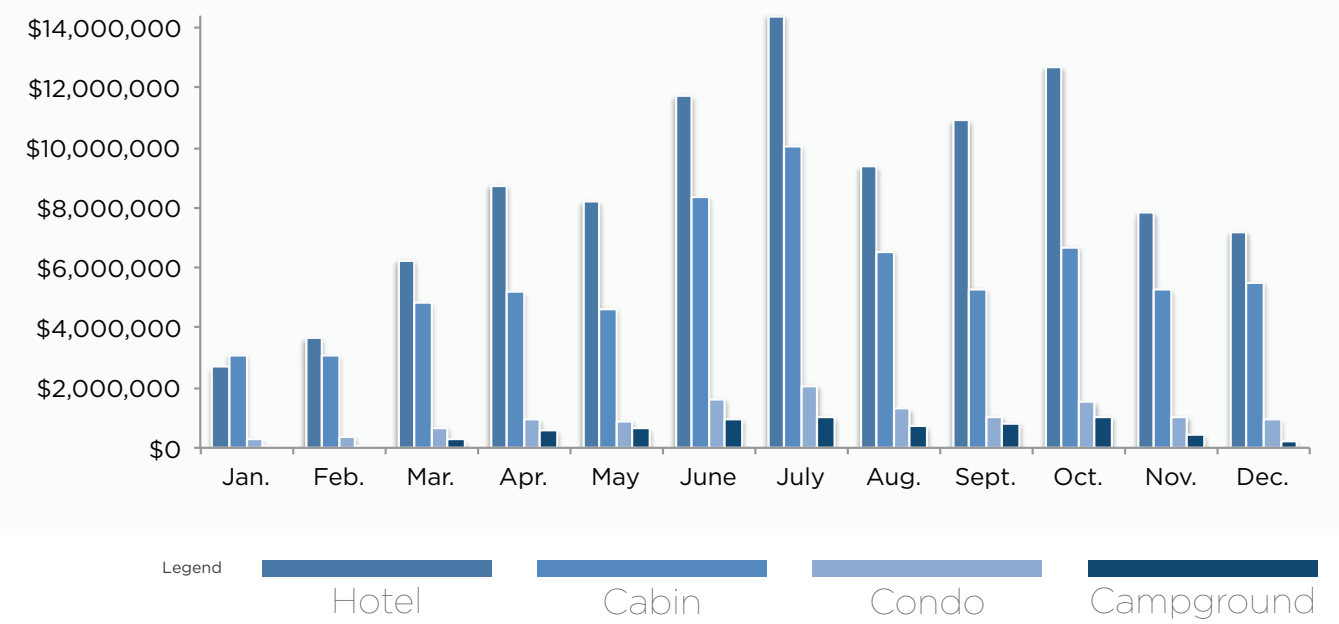
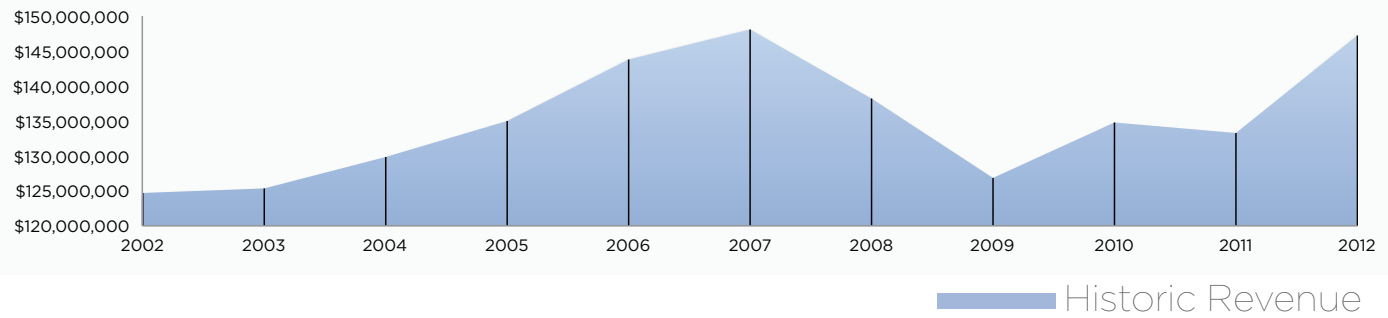




As with the amusement sector, a 2.5% tax is applied to all lodging revenues to support the city budget. Pigeon Forge's lodging tax is currently one of the lowest in the State, especially among other cities in which tourism is the main industry. This tax contributed an estimated 8% to the city's tax revenue collections for 2012. Within Sevier County, there is fierce competition to attract overnight visitors. As a result, Pigeon Forge continues to add new accommodations each year to enhance the city's offerings.



2012*			
Month	Tax Collected	Gross Business	% Change
Jan.	\$118,752	\$4,747,882	0
Feb.	\$142,116	\$5,534,713	10
Mar.	\$228,578	\$9,096,586	37
Apr.	\$287,544	\$11,553,751	14
May	\$289,548	\$11,514,810	20
June	\$430,784	\$17,135,482	17
July	\$526,225	\$21,076,317	9
Aug.	\$346,582	\$13,818,011	13
Sept.	\$348,752	\$13,883,330	-4
Oct.	\$436,949	\$17,491,322	7
Nov.	\$275,926	\$11,075,648	9
Dec.	\$260,801	\$10,367,220	6
<b>Total</b>	<b>\$3,692,557</b>	<b>\$147,295,072</b>	<b>11</b>

2011*			
Month	Tax Collected	Gross Business	% Change
Jan.	\$108,190	\$4,758,308	21
Feb.	\$113,136	\$5,050,583	8
Mar.	\$150,444	\$6,639,227	10
Apr.	\$229,829	\$10,125,574	-1
May	\$215,588	\$9,597,661	-7
June	\$331,498	\$14,661,200	-8
July	\$439,009	\$19,394,987	-10
Aug.	\$297,040	\$12,222,728	-5
Sept.	\$363,081	\$14,472,082	-2
Oct.	\$410,890	\$16,328,047	2
Nov.	\$254,423	\$10,180,032	0
Dec.	\$243,350	\$9,755,486	19
<b>Total</b>	<b>\$3,156,478</b>	<b>\$133,185,915</b>	<b>-1</b>

2010*			
Month	Tax Collected	Gross Business	% Change
Jan.	\$88,728	\$3,920,907	6
Feb.	\$106,268	\$4,691,580	-8
Mar.	\$135,384	\$6,057,850	-6
Apr.	\$229,450	\$10,188,095	1
May	\$233,247	\$10,307,410	9
June	\$360,910	\$15,939,131	6
July	\$486,573	\$21,476,461	13
Aug.	\$291,863	\$12,927,307	6
Sept.	\$335,976	\$14,841,179	14
Oct.	\$362,086	\$16,059,937	5
Nov.	\$642,301	\$10,151,420	0
Dec.	\$186,177	\$8,188,632	9
<b>Total</b>	<b>\$3,458,963</b>	<b>\$134,749,909</b>	<b>6</b>

PRIOR YEARS*		
Year	Gross Business	% Change
1995	\$83,486,467	15
1996	\$86,948,163	4
1997	\$91,552,044	5
1998	\$105,672,788	15
1999	\$110,505,592	5
2000	\$113,513,653	3
2001	\$120,123,317	6
2002	\$124,773,760	4
2003	\$125,443,146	1
2004	\$129,811,102	3
2005	\$135,041,319	4
2006	\$143,881,289	7
2007	\$148,156,932	3
2008	\$138,167,536	-7
2009	\$126,913,639	-8

HOTEL REVENUE*		
Month	Gross Business	% Change
Jan.	\$2,674,392	7
Feb.	\$3,650,985	10
Mar.	\$6,257,644	19
Apr.	\$8,743,079	12
May	\$8,198,502	18
June	\$11,707,561	15
July	\$14,390,658	1
Aug.	\$9,352,970	10
Sept.	\$10,896,708	3
Oct.	\$12,674,731	7
Nov.	\$7,834,349	7
Dec.	\$7,196,526	6
<b>Total</b>	<b>\$103,578,105</b>	<b>9</b>

CABIN REVENUE*		
Month	Gross Business	% Change
Jan.	\$3,108,284	25
Feb.	\$3,080,806	11
Mar.	\$4,840,274	13
Apr.	\$5,184,873	15
May	\$4,644,611	10
June	\$8,363,576	21
July	\$10,062,286	6
Aug.	\$6,522,272	19
Sept.	\$5,304,923	4
Oct.	\$6,694,597	1
Nov.	\$5,271,456	6
Dec.	\$5,529,780	27
<b>Total</b>	<b>\$68,607,738</b>	<b>12</b>

CONDO REVENUE*		
Month	Gross Business	% Change
Jan.	\$278,268	30
Feb.	\$368,373	35
Mar.	\$679,129	48
Apr.	\$936,332	23
May	\$890,874	35
June	\$1,620,851	17
July	\$2,070,247	8
Aug.	\$1,284,019	32
Sept.	\$1,014,988	3
Oct.	\$1,511,150	29
Nov.	\$1,043,092	21
Dec.	\$926,546	13
<b>Total</b>	<b>\$12,623,869</b>	<b>21</b>

CAMPGROUND*		
Month	Gross Business	% Change
Jan.	\$84,985	36
Feb.	\$92,243	51
Mar.	\$268,051	41
Apr.	\$566,416	13
May	\$625,699	9
June	\$957,186	14
July	\$1,029,469	-5
Aug.	\$705,436	14
Sept.	\$814,319	-16
Oct.	\$1,041,501	-7
Nov.	\$417,684	-1
Dec.	\$181,965	0
<b>Total</b>	<b>\$6,784,954</b>	<b>2</b>

\*Data is based on gross receipts taxed at 1%

\*2.5% lodging revenue tax is paid only on properties located within the Pigeon Forge city limits