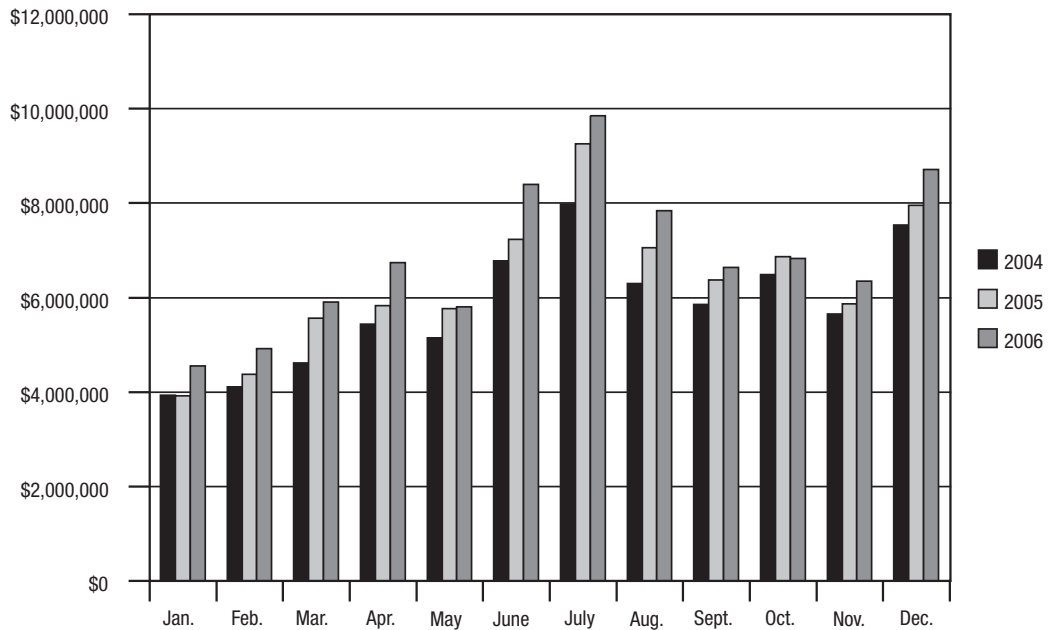


GAS/GROCERY REVENUE 2006

In the past few years, gasoline prices have fluctuated significantly. This has led to more visitors spending money on gasoline and contributing to the increase in this sector. However, if gas prices continue to rise, overall

visitation may be affected as will the amount of money visitors have available to spend in other sectors. Many of our visitors come to Pigeon Forge with a tight budget.

Gas/Grocery Revenue by Month



Gas/Grocery Revenue 2006

Month	Gross Business	% of Change
Jan.	\$4,550,933	16
Feb.	\$4,921,285	12
Mar.	\$5,904,018	6
Apr.	\$6,742,440	16
May	\$5,805,721	1
June	\$8,393,821	16
July	\$9,855,097	6
Aug.	\$7,839,030	11
Sept.	\$6,638,148	4
Oct.	\$6,822,185	-1
Nov.	\$6,349,944	8
Dec.	\$8,713,700	10
Total	\$82,536,322	8



2005

Month	Gross Business	% of Change
Jan.	\$3,924,607	-1
Feb.	\$4,377,698	6
Mar.	\$5,558,340	21
Apr.	\$5,830,111	7
May	\$5,766,832	12
June	\$7,235,455	7
July	\$9,262,299	16
Aug.	\$7,061,931	12
Sept.	\$6,376,063	9
Oct.	\$6,865,874	6
Nov.	\$5,871,549	4
Dec.	\$7,951,341	5
Total	\$76,082,100	9

**Gas/Grocery
Revenue
2005**

2004

Month	Gross Business	% of Change
Jan.	\$3,928,692	23
Feb.	\$4,111,075	22
Mar.	\$4,611,573	20
Apr.	\$5,440,732	17
May	\$5,151,515	13
June	\$6,781,848	15
July	\$7,976,778	14
Aug.	\$6,299,768	6
Sept.	\$5,857,821	6
Oct.	\$6,484,229	10
Nov.	\$5,649,721	11
Dec.	\$7,541,638	11
Total	\$69,835,390	13

**Gas/Grocery
Revenue
2004**

Prior Years

Year	Gross Business	% of Change
1995	\$34,213,741	N/A
1996	\$40,055,951	17
1997	\$41,533,340	4
1998	\$47,858,700	15
1999	\$54,594,236	14
2000	\$62,040,964	14
2001	\$65,007,834	5
2002	\$60,670,662	-7
2003	\$61,764,206	2

**Gas/Grocery
Revenue
Prior Years**